

**ChemGrout®**

# CG-550 Workhorse Series

Simple, field proven and highly productive, the Workhorse Series is ideal for neat cements, bentonites and non-shrink grouts.

**CG-550/2C4/EH  
Electric Powered**



**CG-550/2C4/A  
Air Powered**



A 45-gallon mix tank, large holding hopper, progressing cavity pump and centrally located controls, allow for continuous production with a single operator.

**CG-555/2C4/GH  
Gas/Hydraulic**



ChemGrout's new high-strength aluminum alloy pump provides operator easy access for both cleaning and maintenance.

Maximum Output 8 gpm (30 lpm).  
Maximum pressure 174 psi (12 bar),  
optional 261 psi (18 bar).

Power options include air, hydraulic,  
gas/hydraulic, electric/hydraulic &  
diesel/hydraulic.

**ChemGrout®**

Widest Selection of Grouting Equipment in the World

## Workhorse Series – Simple, Efficient and Cost Effective

Designed to mix and pump a wide variety of materials, the Workhorse Series offers exceptional productivity, low maintenance and a quick payback. The balanced design features a 45-gallon mix tank, 12-gallon holding hopper and ChemGrout's unique size 4 progressing cavity grout pump.

This simple, easy to use system is complete and ready for jobsite operation. The mix tank is equipped with bag breaker, baffles and a variable speed high-efficiency paddle that provides high shearing action for thorough and complete particle wetting. The tank outlet valve is a large slide gate that allows the thickest materials to fall easily into the pump



**Easy access clean-out port.**

hopper. The efficient use of a holding hopper allows pumping, while another batch is mixed, ensuring a continuous output of material.

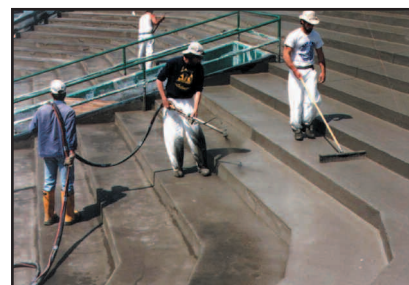
The Workhorse Series utilizes an open throat progressing cavity pump, featuring a non-pulsating positive displacement rotor-stator that provides a constant discharge of materials. This steady material flow is essential for many spray and injection applications. The pump's new high-strength aluminum alloy construction offers durability and a weight reduction of 33% over that of similar pumps. A hinged cleanout port has also been added to the suction housing for quick access and clean up. Both mixer and pump controls are centrally located and are variable speed. The time-tested Workhorse Series is easy-to-use, complete, and ready for jobsite operation.

### Specifications

CG-550 Pumps	2C4 – 2 Stage	3C4 – 3 Stage
Pump	Size 4, open throat, non-pulsating	
Maximum Pressure	174 psi (12 bar)	261 psi (18 bar)
Maximum Output	8 gpm (30 lpm)	
Mixing Tank	45 gallons (170 liters)	
Holding Hopper	12 gallons (45 liters)	

CG-550 Skid - Power	Required	Weight	Size
Air	150 cfm, 100 psi	700 lbs	72" x 31" x 46"
Hydraulic	12 gpm, 1200 psi	600 lbs	72" x 31" x 46"
Electric/Hydraulic	460/230v, 19/38A	1000 lbs	72" x 31" x 46"
Gas/Hydraulic	Self-Contained	1000 lbs	72" x 31" x 46"
Diesel/Hydraulic	Self-Contained	1150 lbs	72" x 31" x 46"

CG-555 Trailer - Power	Required	Weight	Size
Gas/Hydraulic	Self-Contained	1550 lbs	110" x 68" x 64"
Diesel/Hydraulic	Self-Contained	1700 lbs	110" x 68" x 64"



Concrete resurfacing.



Self-leveling underlayments.

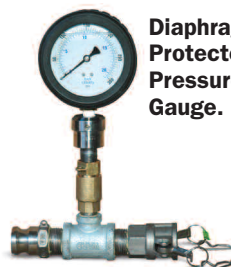
### Accessories

**Grout Hose.** Equipped with quick disconnect fittings. Available in 25 and 50 foot lengths.



#### Water Meters.

Available in manual or automatic. Accurately measures the water for each batch.



#### Diaphragm Protected Pressure Gauge.

#### Spray Wand.

Multi-purpose wand accurately controls spray pattern and density.



### Applications include:

Pavement stabilization, void filling, waterproofing, anchor, cable & rock bolts, encasements, undersealing, marine/underwater, well casing, abandon shafts/holes, machine base installation, column bases, underlayments, slab raising & bridge rehabilitation.

# ChemGrout®

Widest Selection of Grouting Equipment in the World

ChemGrout, Inc., P.O. Box 1140, 805 E. 31st Street, LaGrange Park, IL 60526 USA • Phone: (708) 354-7112 • Fax: (708) 354-3881

Visit our web site: [www.chemgrout.com](http://www.chemgrout.com) • E-mail: [info@chemgrout.com](mailto:info@chemgrout.com)