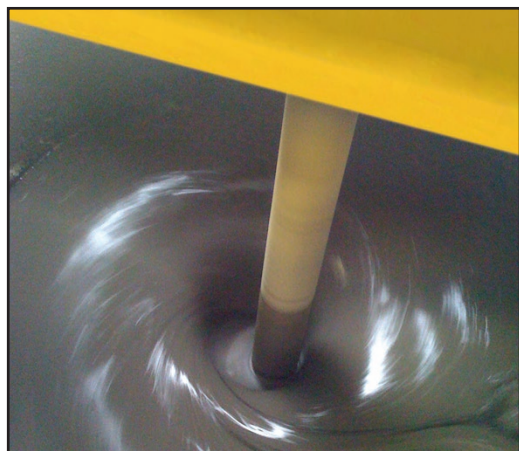


ChemGrout[®]

CG-460 High-Pressure Colloidal Series

ChemGrout's CG-460 High-Pressure Colloidal Series is designed for the grouting of hollow bars, tiebacks and ground anchors.

**CG-460/2X8/H
Hydraulic**



ChemGrout's variable speed, high shear disk rotates up to 3000 rpm, providing superior mix consistency.

Dual 70 gallon colloidal mix tanks for independent mixing of flushing and structural grouts.

Features a 2X8 high-pressure plunger pump, delivering 15 gpm and 2000 psi. Optional 3X8 pump, delivers 20 gpm, 1000 psi.

Heavy-duty frame and lifting lugs stand up to the most rugged jobsite conditions.

Power options include air, hydraulic, electric/hydraulic, and diesel/hydraulic.

ChemGrout[®]

Widest Selection of Grouting Equipment in the World

CG-460 High-Pressure Colloidal Series

The versatile ChemGrout model CG460/2X8 is a skid mounted, high-pressure grout plant that is designed to mix and pump neat cements at high-pressures. The CG460 features two high shear colloidal 70-gallon (265 liters) mixing tanks, and a double acting, high-pressure plunger type grout pump. Dual 70 gallon colloidal mix tanks allow for independent mixing of flushing and structural grouts. Each mixer is equipped with variable speed, high-efficiency, high shear disks, rotating at speeds up to 3,000 rpm that provides rapid and thorough mixing. The tank outlet valves are a large 4" butterfly type that assures full material flow into pump suction. The grout pump is a double acting, positive displacement plunger style that will deliver 15 GPM (57 l/m), 2000 PSI (138 BAR).

The CG460 Series is available in a variety of power options models include air, hydraulic, electric/hydraulic (25 HP electric motor), and diesel/hydraulic (33 HP Kubota Engine). Both electric and diesel model require a separate skid mounted power pack. The rugged steel frame stands up to the toughest conditions on the job site. Operator controls are centrally located for efficient production. All components are easily accessible for operating, cleaning and maintenance.



**2X8DBL
Plunger Pump**

The ChemGrout CG2X8 High-Pressure Plunger Pump features patented fasteners that dramatically reduce disassembly time for quick cleaning and maintenance.

ChemGrout CGPU25/EH Electric/Hydraulic Power Pack



Specifications

Two Colloidal Mix Tanks	High-Pressure Grout Pump	Max. Output	Max. Pressure
70 gallons (265 liter)	Double Acting 2X8 Plunger Pump	15 gpm (57 lpm)	2000 psi (138 bar)

Model Number	Description	Dimensions	Weight
CG460/2X8/A	Skid Mounted, Air Powered, High Shear Colloidal Grout Plant Requires 375 CFM (10.6 M3/Min.) @ 100 PSI (7 Bar) of compressed air	96" L X 40" W X 56"H	1400 lbs
CG460/2X8/H	Skid Mounted, Hydraulic High Shear Colloidal Grout Plant Requires 3 Circuits, 2 @ 6 gpm, 2400 psi (mixers), 1 @ 16 gpm, 2400 psi (pump)	108"L X 40"W X 56"H	1320 lbs
CGPU25/EH	Skid Mounted Electric/Hydraulic Power Pack. Requires 3 phase power, several voltage options available	85"L X 36"W X 46"H	1240 lbs
CGPU33/DH	Skid Mounted Diesel/Hydraulic Power Pack. Utilizes Kubota 33 HP Turbo Diesel Engine.	85"L X 36"W X 46"H	1450 lbs

Accessories

High-Pressure Grout Hose

Equipped with hammer union fittings. Available in 25 and 50 foot lengths.



Water Meters

Available in manual or automatic. Accurately measures the water for each batch.

In-Line Protected Pressure Gauge



Ball Seat Remover/Installer
Easily aligns double tapered steel ball seats on HP plunger pumps.



Applications include:

Hollow Bars, Grouted Anchors, Tiebacks, Post Grouting, Shaft Sealing, Water Cutoffs and Hydro Electric Dam Grouting.

ChemGrout®

Widest Selection of Grouting Equipment in the World