

**ChemGrout®**

# CG-680 High-Pressure Colloidal Series

**ChemGrout's CG-680 High-Pressure series is ideal for heavy construction projects including foundations, encasements, mining, tunneling, anchors & hydro-electric dams.**

**CG680/3X3.5X8PLC/D4  
Diesel/Hwd. Powered**

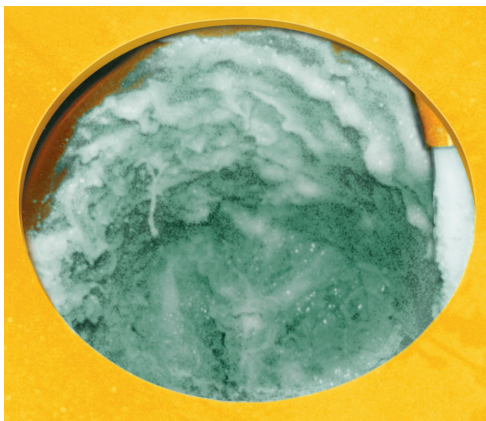


High pressure and high capacity, with production rates of up to 8 cubic yards per hour.

ChemGrout's patented double acting, positive displacement plunger pump features durable cast iron construction for the punishing demands of high-pressure grouting.

High shear colloidal mixer increases grout strength, while reducing mix time and enhancing flow rate.

Reversible ball seats and chrome plated plungers significantly reduces maintenance costs.



High shear colloidal mixing significantly reduces mix time, enhancing flow rate and maximizing jobsite operation

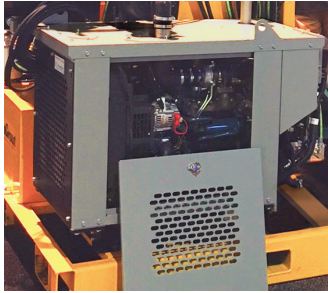
**ChemGrout®**

Widest Selection of Grouting Equipment in the World

## CG-680 High-Pressure Colloidal Series

The ChemGrout CG-680 High-Pressure series is a high pressure, high capacity, skid mounted colloidal grout plant. The HP colloidal series easily mixes and pumps slurries of cement, flyash, bentonite and lime flour. Each grouting machine in this series is designed to provide a continuous mixing and pumping operation. These units feature a 17 cubic foot homogenizing colloidal mixer, a 17 cubic foot agitated storage tank and a 32 GPM grout pump.

Available CG680 power options include Electric/Hyd. and 45 HP Diesel/Hyd. Engine (Pictured).



The colloidal mixer is equipped with a 2X3X12 high shear centrifugal diffuser-type pump that disperses the cementitious material down to its finest particle size to achieve complete particle wetness. The mixing tank is also equipped with a bridge breaker to break apart the material before entering the colloidal mixer. The agitated storage tank is equipped with a variable speed high-efficiency paddle mixer that maintains a thoroughly mixed grout while waiting to be pumped.

The grout pump is connected directly to the agitated storage tank to provide a continuous pumping operation. The grout pump is a positive displacement, high capacity, double acting plunger pump.

The rugged steel frame stands up to the toughest conditions on the construction site. Operator controls are centrally located for efficient production. All components are easily accessible for operating, cleaning and maintenance.



ChemGrout offers both manual and automatic (pictured) pressure controls on the CG680 Series.

## Specifications

Pump Size	Maximum Output	Maximum Pressure
3.5" x 8"	32 gpm (120 lpm)	1200 psi (80 bar)

Model Number	Description	Dimensions	Weight
CG680/3.5X8PLC/EH	Skid Mounted Electric/Hydraulic Powered HP Colloidal Grout Plant. Requires 48-60 amps, 3 Phase current, several voltage options.	109"L X 60"W X 70"H 277L X 152W X 178H (cm)	3,200 lbs. 1452 kg
CG680/3X3.5X8PLC/D4	Skid Mounted Diesel/Hydraulic Powered HP Colloidal Grout Plant. 45 HP diesel engine with electric start.	121"L X 60"W X 79"H 307L X 152W X 200H (cm)	3,800 lbs. 1724 kg



Dam Foundation/Gallery



Fracturing/Regrouting



Tie Backs



Foundations

### Applications include:

Foundations, soil anchors, mining, dam foundations, soil compaction, soil & rock grouting, waterproofing, tunnels, rock bolts, encasements and hydro-electric dams.

# ChemGrout®

Widest Selection of Grouting Equipment in the World